



Energy-saving

Environmental

## Edex Technology Co., Ltd.

| Company |  
No. 11 ~ 13, Lane 243, Jhongjheng Rd.,  
Lujhou Dist., New Taipei City 247, Taiwan  
| TEL |  
886-2-2281-9918 • 2847-1194  
| FAX |  
886-2-2285-6935 • 2847-1491  
| E-mail |  
yescan@edex.com.tw  
| Web |  
www.edex.com.tw

| Factory |  
No.217, Guanhai Blvd., Bali Dist.,  
New Taipei City 249, Taiwan  
| TEL |  
886-2-2610-8396  
| FAX |  
886-2-2610-6396



			EP15-D25	EP15-D35	EP25-D25	EP25-D35
Injection system	Injection mode		Vertical clamping / Horizontal Injection			
	Plunger diameter	mm	25	35	25	35
	Injection volume	cm <sup>3</sup>	50	96	50	96
	Injection rate	cm <sup>3</sup> /s	19.6	38.5	19.6	38.5
	Injection speed	Mm/s	40	40	40	40
	Injection pressure	kgf/cm <sup>2</sup>	50	50	50	50
	Nozzle Stroke	mm	120	120	120	120
	Nozzle Contact Force	Tonf	0.195	0.195	0.195	0.195
	Nozzle Height	mm	65~150			
Clamping system	Table type		Fixed table Single slide table	Fixed table Single slide table	Double slide table	Double slide table
	Max. clamping force	KN/Tonf	15 / 1.5	15 / 1.5	25 / 2.5	25 / 2.5
	Distance b/w tie-bars	mm	360	360	-	-
	Max. mold size	mm	-	-	450 X 210	450 X 210
	Max. daylight	mm	350	350	350	350
	Min. mold height	mm	105	105	105	105
	Platen dimension	mm	450 X 200	450 X 200	450 X 210	450 X 210
	Ejector stroke	Tonf/mm	0.2 / 50			
	Heater zone	set	N1+N2+H1+T1			
	Heater capacity	KW	4			
Machine mode	Dimension	m(LxWxH)	1.3 x 0.55 x 1.84		1.45 x 1.57 x 1.93	
	Weight	Ton	0.55		1.0	



## Edex Low Pressure Molding Machine



Servo Motor for Packaging Injection and Mold Clamping / Opening  
Pneumatic Pressure for Injection Unit and Ejector

Precise injection controlled by Servo motor  
can package any shapes of products by extremely low injection pressure



# Edex Low Pressure Molding Machine

## Technique advantage

### Technique advantage of Edex low pressure molding machine

The Edex is the very first packaging injection machine using patented plunger injection system, unlike conventional packaging machine using pump for packaging, by precise servo motor and computer calculations allowed user to set parameter for different kinds of products, with precise clamping unit controlled by servo motor that makes packaging injection more precise, and easier.

Edex is your best choice that provides the most precise techniques and deliver the best service.

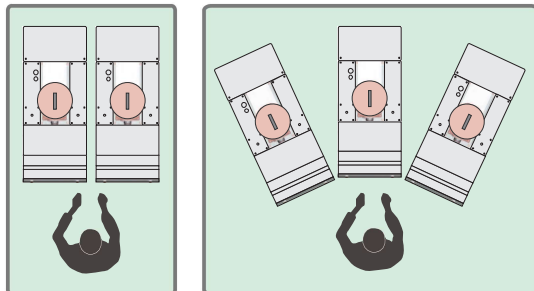
	Edex low pressure molding machine	Traditional Packaging Machine
Packaging style	Injection style	Extruder style
Packaging power type	Servor motor	Gear pump
Packaging power adjustment	3 stages injection / 2 stages holding pressure	1 stage torque
Clamping power type	Servor motor	Pneumatic
Heat stage	barrel 1 set / nozzle 1set / tank 2 set	barrel 1 set / tank 1 set

## Applications

### Diversified application of Edex low pressure molding machine

With full standard functions to apply widely application requirements, saved customers' expenses from purchasing machine for different needs; saved the working space by extreme narrowed width, one operator can operate 2 or 3 machine at the same time with side by side placement.

Edex own a great R&D team to satisfy customer needs for any application and customized products. We will be your best partner in the long term relationship.



- Multiple machines could be controlled by only one operator with its extreme narrowed width machine design.



## Low pressure molding process

insulation

water proof

dust proof

shock proof

pollution proof

weatherability

### Low pressure molding process

Edex low pressure injection method is to melt solid adhesive granule into liquid status by electric heating then injected by computer controlled plunger into package inserted electronic device, after cooling, it turns into a flat package status.

the features are precise low pressure control, fast cooling molding, high efficiency with low product cost. It can reach the insulation, water proof, dust proof, shock proof, pollution proof and weatherability requirements.

## HMA Introduction

### Introduction of hot melt adhesive

Hot melt adhesive is resin with no volatilize, solid status in normal temperature, after melting, it becomes stable and hard to carbonized adhesive. After cured, the adhesion is widely used in auto, electric, medical industry application for sensor and water-proof packaging. For PC usage, it could be the protection packaging that is faster, more precise in a small working station than traditional dispensing process and has become the new material for packaging process.

## Features

product inserted  
into the mold

mold clam /  
injection

cooling /  
mold open

ejector

finish

- 1~50 bar extreme low inj. pressure, electric device never breaks.
- 1~15 KN clamping force for protecting products.
- 150~220 °C low temperature melt adhesive, chip never breaks.
- High packaging quality by servo motor inj. and JPN computer control system.
- Servo motor for clamping unit, stable action and precise control mold venting.
- 10~60 second cycle time reduce packaging cost.
- Product packaged after taking out from the machine, save more space.

- vertical servo motor clamping system.
- Horizontal parting line injection system.
- 12" keyboard or 15" full color TFT-LCD touch panel controller.
- 3 stages injection 2 stage holding pressure and 100 mold data can be saved.
- All-electric injection system, the most precise packaging quality.
- Dual protection of restart button and safety light curtains.